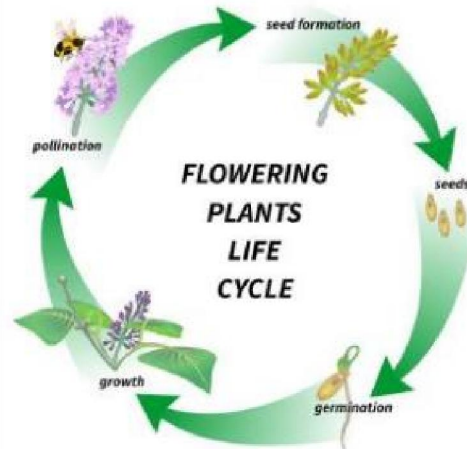
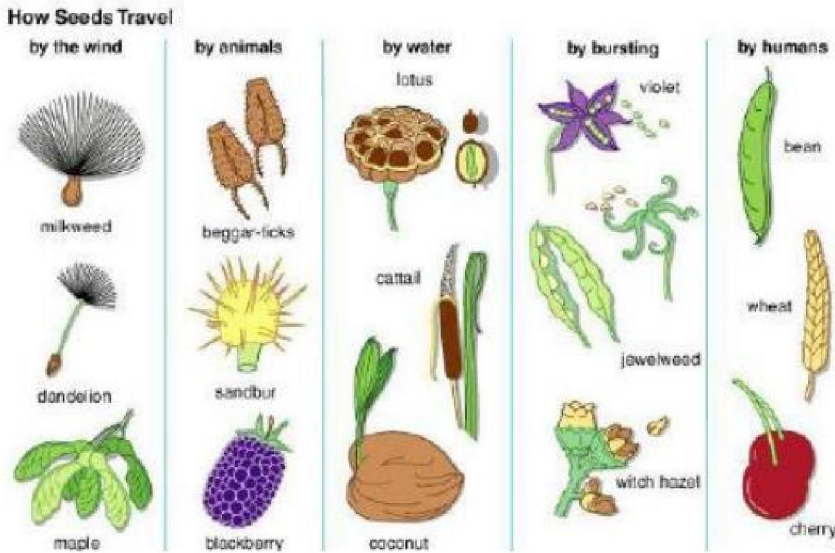
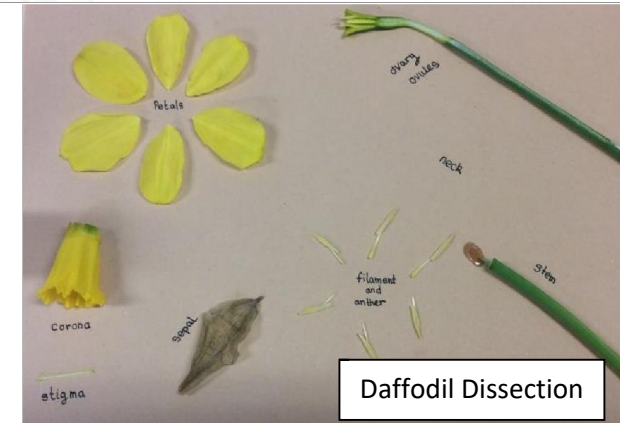
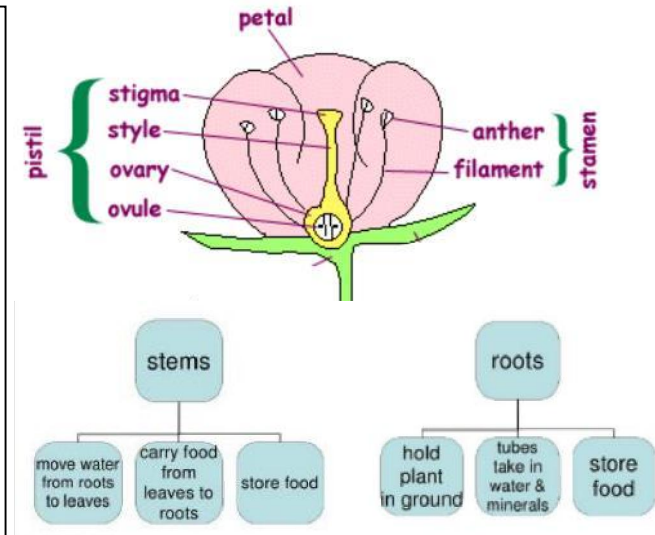


VOCABULARY

- **Asexual plant reproduction** is when a plant reproduces by making a copy of the parent plant.
- A **bulb** is an underground food store. Side bulbs can form to make copies of the parent plant through asexual reproduction. For example, daffodils grow from bulbs.
- A **tuber** is an underground food store. It can make copies of the parent plant through asexual reproduction. For example, a potato is a tuber.
- A **runner** is a side shoot which can grow a plantlet which is a copy of the parent plant. For example, strawberries grow runners.
- **Sexual plant reproduction** is when a plant reproduces by forming seeds or spores.
- **Germination** is when a seed or spore starts to grow into a new plant.
- **Pollination** is when pollen is carried from the male part to the female part of a plant, usually by insects or the wind.
- **Fertilisation** is when pollen fertilises the eggs within the female part of a plant, so seeds can form. The seeds are often contained within a fruit.



Germination is the growth of a seed into a young plant.

