



## Safeguarding at GWJS

Our school Designated Safeguarding Leads are:

**Mrs Petchey, Mrs Stolworthy, Mrs Eaglen, Miss Alderton,  
Mrs Derer and Mrs Burman**

Please speak to one of these members of staff if you are worried or concerned about the safety of a child.

If you have a safeguarding concern about a child out of school hours, the number to ring is:



**CADS – Children’s Advice and Duty Service – 0344 800 8020**

Mrs Derer our school Parent Support Advisor and Mrs Burman and Miss Alderton our school Pastoral Leads and ELSA trained staff are on our school playground every morning from 8:45am. Mrs Derer our school Parent Support Advisor is on our playground every Monday, Thursday and Friday morning from 8:45am.

Mrs Burman, Miss Alderton and Mrs Derer are always happy to talk to you about any worries or concerns relating to your child at home or any further support we may be able to offer or signpost you to.

## ONLINE SAFETY





# What Parents & Educators Need to Know about PALWORLD

## WHAT ARE THE RISKS?

In Palworld, players head out into an environment where they must craft items and survive alongside creatures called 'Pals'. In this sense, it's similar to Minecraft: fight monsters while maintaining a base. Palworld has sold more than six million copies and often has over two million people playing online simultaneously.



## MATURE CONTENT



While Palworld may look cute and cuddly, the game does have its more mature moments. For example, if you try to catch a Pal and don't succeed, the game displays a mild swear word. There are also minor references to infirmity acts like slavery when getting your Pals to perform certain tasks for you. While the presentation is intended to be humorous, this could still be seen as being in poor taste.

## VIOLENCE



Palworld has been referred to as "Pokémon with guns" and with good reason. As the game progresses, Pals can be given firearms, explosives and other weapons, allowing them to fight by the player's side. There are several moments where cute animals use these guns to kill other Pals or fight against bosses. The violence is cartoonish and bloodless, but it's present.

## SUGGESTIVE WRITING



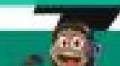
Some of the Pals' descriptions – found in the game menu – can be very suggestive and adult in nature. The game makes a joke of balancing on the line between age-appropriate and mature content; playing on the contrast between the two while never being outright explicit. While it's possible that younger players won't notice this content, it's just as conceivable that they will.

## ONLINE PLAY



Palworld can be played with other people online. On Xbox, players can only play with people on their friends list. On PC, however, up to 32 players can share in the same game, playing in a large online world, and these players may not necessarily be known to the host beforehand. It can be quite complicated to set up these servers. However, it can be quite complicated to set up these servers (online worlds) and they cost money to keep active.

## DIFFICULTY



Despite its endearing visuals, Palworld is actually an extremely difficult game. In places like defeating bosses, catching Pals and exploring the environment can all be very tricky. It takes a lot of skill – or working together with a friend – to be successful, which could be off-putting or even aggravating to a player expecting something more like Minecraft or Pokémon.

## Advice for Parents & Educators

### WATCH GAMEPLAY



Watching gameplay and reviews for Palworld on sites like YouTube is the best available means of gathering information on it, second only to playing it for yourself. Currently, there are plenty of videos showing this game off to the internet at large, along with detailed breakdowns of what can be found or done within it.

### LEND A HAND



By learning the basics of the game – Pal catching, battling, crafting items and building up a base – you can help to lower the difficulty for younger players. This, in turn, decreases the likelihood that such players will need to look online for tips and tricks, where they could quite easily stumble across more violent and mature content associated with the game.

### SET CONTENT LIMITS



As Palworld is available on Xbox Game Pass, it's easy for players to access it. Any player subscribed to this service can simply find the title on Game Pass and hit the download button. If a child or young person isn't allowed to play Palworld, the best way to prevent them downloading it regardless is to enable age limits on their account. Setting the limit below 12 will not allow users to install Palworld.

### PLAY TOGETHER

By playing Palworld yourself, you'll have the best chance of catching any content that you don't think is suitable for children, as well as getting an idea of how violence is presented in the game. The conflict is cartoonish in nature – until players and Pals unlock the ability to use guns, at which point it can become more intense. It's likely best for you to give it a look and form your own opinion.



### PLACE BOUNDARIES

Limit options when it comes to online play. For players on PC, they'll still be able to cooperate with friends through the game's multiplayer option, much like Xbox users. Just because they have the option to run a dedicated server that's open to anyone doesn't mean they need to take it. The risks of interacting with strangers can be significantly lowered or even eliminated entirely by playing on servers which are restricted to friends only.



### Meet Our Expert

Editor in Chief of gaming and esports site 99Recess, Lloyd Coombes has worked in the games media industry for five years. He's played every Tekken title since the series began and, as a parent, also values the importance of online safety. Writing mainly about tech and fitness, his articles have been published on influential sites including IGN and TechRadar.

